



Upgrade your kit to its full potential and achieve new visual heights with EVO II Pro. With an 1-inch sensor camera capable of capturing 6K video up to 30fps, you are now able to record stunning detail not possible before on an aerial platform of this size. Featuring HDR video, intuitive camera controls, and an adjustable aperture with a max ISO of 12,800, EVO II Pro allows you to have exceptional performance and flexibility in any shooting environment.

Included with EVO II Pro is a smart controller featuring a built-in 3.3-inch OLED display, eliminating the need for a mobile device. With a four-hour battery life and an ergonomic, compact design, pilots can easily pack and fly on the go.

FEATURES



Adjustable aperture
from f/2.8-f/11



Captures dynamic
20MP stills



Flight times up
to 40 minutes



2.4Ghz antennas for
up to a 9km range and
better reception
in urban areas



Built-in 3.3-inch OLED
display allows pilots the
freedom to fly without a
mobile device



12 image sensors
create a 3D world
for omnidirectional
obstacle avoidance

TYPES OF USE



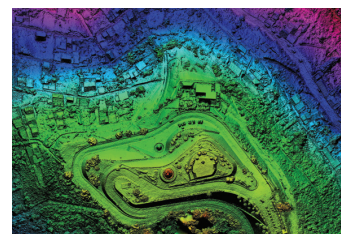
CINEMATOGRAPHY

Professional film creators will find camera controls and features that they have come to expect as the industry standard. Capable of capturing 6K video up to 30fps and 4K video up to 60fps, our EVO II Pro features built-in HDR bracketing and HDR video, 10-12 bit recording, H.265 codec, and A-LOG gamma curve.



PHOTOGRAPHY

With EVO II Pro, photos have never looked so good. Re-experience every moment with exceptional low-light photography and time-lapse capabilities made possible with our 1-inch sensor. With an adjustable aperture from f/2.8-f/11, max ISO of 12,800, built-in HDR bracketing, and 20MP stills, pilots now have unmatched performance and flexibility.



MAPPING

Featuring our new 6K 1-inch sensor, EVO II Pro gives users the highest quality pixels available on a foldable drone. Flexible and intuitive mission planning allows the pilot to create custom waypoints for any job. With SDK available soon for third-party integration, executing your mission is easier than ever.

AIRCRAFT

Takeoff Weight	1127g-1192g
Wheelbase	397mm
Max Speed	Standard: 15m/s Ludicrous: 20m/s
Max Service Ceiling	7000m
Max Flight Time	Hover: 35min Moving: 40min
Transmission Type	FCC: 2.4GHz ALink
Max Transmission Distance	9km
Storage	Internal: 8GB Max SD: 128GB
Battery Type	LiPo 3s
Battery Size	7100mAh
Controller Screen	3.3in OLED 330 Nits
Controller Battery	5000mAh

SENSING SYSTEM

Sensing Type	12 Omnidirectional computer vision sensors
Detection Range	Forward: .5m - 40m Downward: .5m - 22m Backward: .5m - 32m Sides: .5m - 24m Upward: .5m - 24m
FOV	Forward: Horizontal 60° Vertical 80° Backward: Horizontal 60° Vertical 80° Upward: Horizontal 60° Vertical 50° Downward: Horizontal 60° Vertical 50°

CAMERA PAYLOADS

	EVO II 8K	EVO II PRO 6K	EVO II DUAL
Sensor	Sony IMX586	Sony IMX383	FLIR Boson + IMX586
Max Resolution	Stills: 8000*6000 Video: 7680*4320	Stills: 5472*3648 Video: 5472*3076	Stills: 8000*6000 IR: 640*512
Format	MOV/MP4	MOV/MP4	MOV/MP4
Codec	H.264/H.265	H.264/H.265	H.264/H.265
HDR Support	Yes	Yes	Yes
AF Support	Yes	Yes	Yes
Defog	Yes	Yes	NA
Histogram	Yes	Yes	Visible Only
10-Bit Log	Yes	Yes	Visible Only
Aperture	f1.8	f2.8-f/11	Visible f1.8
Zoom	1-8x(4x lossless)	1-8x(4x lossless)	1-8x(4x lossless)
ISO Range	Video: 100 - 3200 Photo: 100 - 3200	Video: 100 - 6400 Photo: 100 - 12800	Visual Light 100 - 3200