



Designed with portability and reliability in mind, EVO II Dual is the tool that gets the job done. Complete with a high-resolution 8K sensor and thermal imaging up to 640x512 made possible with the FLIR Bosson sensor, EVO II Dual relays the most critical information back to the pilot. With features including Visible Light mode and Picture in Video, first responders, contractors, and business owners now operate efficiently, safely, and are more effective.

Included with EVO II Pro is a smart controller featuring a built-in 3.3-inch OLED display, eliminating the need for a mobile device. With a four-hour battery life and an ergonomic, compact design, pilots can easily pack and fly on the go.

FEATURES



Records unmatched
8K HDR video and IR



Flight times up
to 40 minutes



Captures dynamic
48MP stills



Built-in 3.3-inch OLED
display allows pilots the
freedom to fly without a
mobile device



12 image sensors
create a 3D world
for omnidirectional
obstacle avoidance



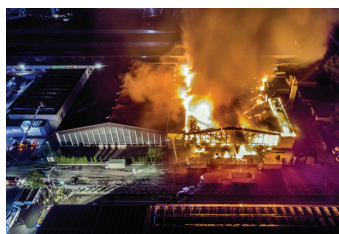
2.4Ghz antennas for
up to a 9km range and
better reception
in urban areas

TYPES OF USE



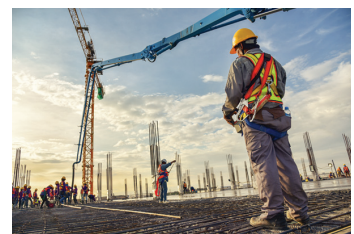
FIRST RESPONDERS

EVO II Dual transmits the most crucial information back to the pilot and allows for Live Deck backward compatibility so your team can make informed decisions in the most stressful of circumstances. From case to air in under 30 seconds with no flight restrictions, no forced updates, and no repeat calibrations, first responders can make every second count.



INVESTIGATORS

Several features of EVO II Dual makes it an excellent tool for investigators who build their cases based on accuracy. With the ability to produce 8K 24fps RGB video and up to 640x512 30Hz thermal recording, investigators can view and capture a 360-degree view of the site on EVO II Dual's remote controller.



CONSTRUCTION

In the industry of engineers, contractors, and project managers, it's essential that your drone works as hard as you do and can capture even the smallest details in real-time. Features such as EVO II Dual's Picture in Picture Mode can record up to 1080p at 30fps and overlays thermal imaging to standard RGB footage, allowing the pilot to view both simultaneously.

AIRCRAFT

Takeoff Weight	1127g-1192g
Wheelbase	397mm
Max Speed	Standard: 15m/s Ludicrous: 20m/s
Max Service Ceiling	7000m
Max Flight Time	Hover: 35min Moving: 40min
Transmission Type	FCC: 2.4GHz ALink
Max Transmission Distance	9km
Storage	Internal: 8GB Max SD: 128GB
Battery Type	LiPo 3s
Battery Size	7100mAh
Controller Screen	3.3in OLED 330 Nits
Controller Battery	5000mAh

SENSING SYSTEM

Sensing Type	12 Omnidirectional computer vision sensors
Detection Range	Forward: .5m - 40m Downward: .5m - 22m Backward: .5m - 32m Sides: .5m - 24m Upward: .5m - 24m
FOV	Forward: Horizontal 60° Vertical 80° Backward: Horizontal 60° Vertical 80° Upward: Horizontal 60° Vertical 50° Downward: Horizontal 60° Vertical 50°

CAMERA PAYLOADS

	EVO II 8K	EVO II PRO 6K	EVO II DUAL
Sensor	Sony IMX586	Sony IMX383	FLIR Boson + IMX586
Max Resolution	Stills: 8000*6000 Video: 7680*4320	Stills: 5472*3648 Video: 5472*3076	Stills: 8000*6000 IR: 640*512
Format	MOV/MP4	MOV/MP4	MOV/MP4
Codec	H.264/H.265	H.264/H.265	H.264/H.265
HDR Support	Yes	Yes	Yes
AF Support	Yes	Yes	Yes
Defog	Yes	Yes	NA
Histogram	Yes	Yes	Visible Only
10-Bit Log	Yes	Yes	Visible Only
Aperture	f1.8	f2.8-f/11	Visible f1.8
Zoom	1-8x(4x lossless)	1-8x(4x lossless)	1-8x(4x lossless)
ISO Range	Video: 100 - 3200 Photo: 100 - 3200	Video: 100 - 6400 Photo: 100 - 12800	Visual Light 100 - 3200